


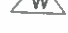








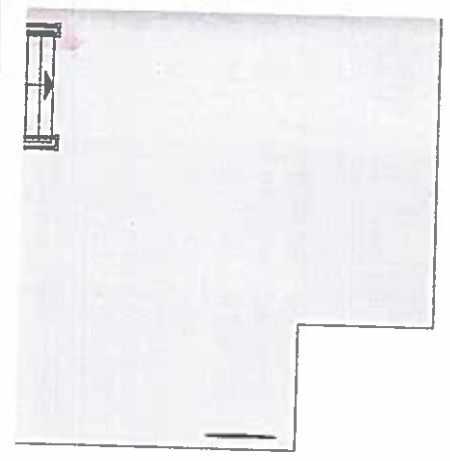
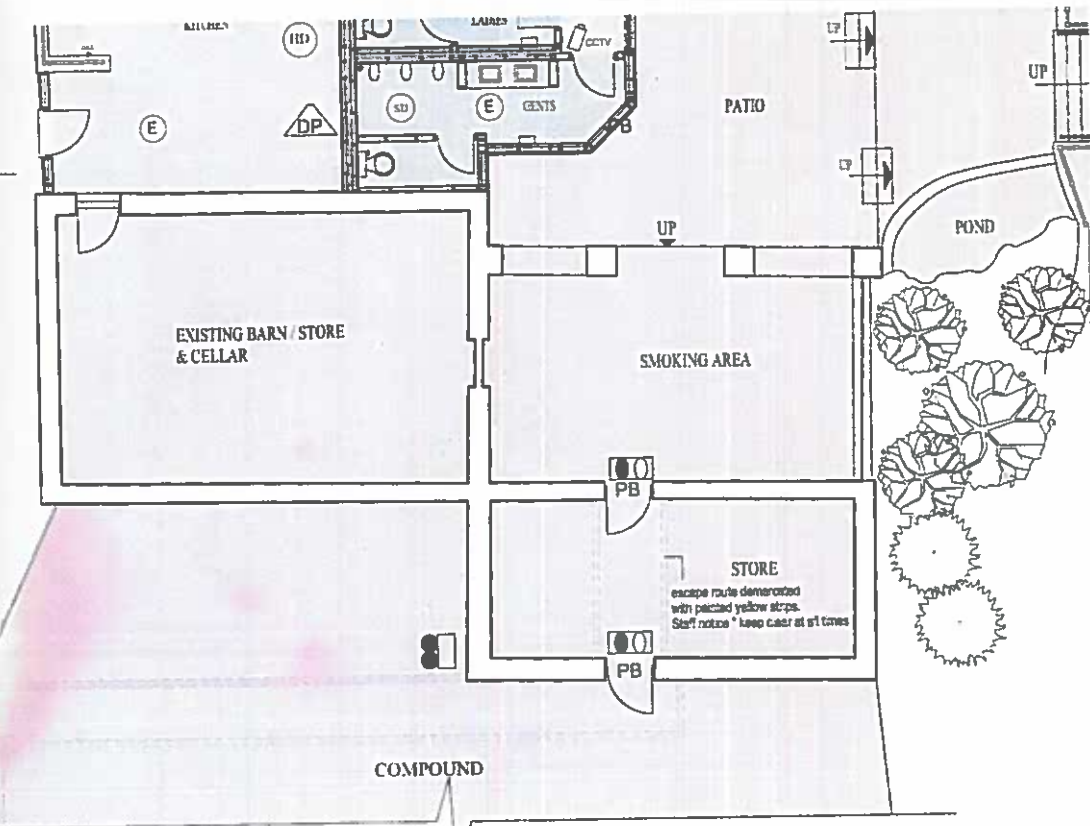








-  Emergency exit light
-  VP Vision panel
-  FRG Fire resisting glazing
-  9 Litre water extinguisher
-  CO₂ 4.5Kg CO₂ extinguisher
-  DP 10Kg Dry powder extinguisher
-  1m x 1m Fire blanket
-  CALL POINT
-  HEAT DETECTOR
-  SMOKE DETECTOR
-  SOUNDER
-  FIRE ALARM PANEL



-  N2 Staff fire notice
-  Twin Spot emergency light
-  PB Panic Bolt.
-  LICENCED AREAS
-  TOILETS
-  AREA FOR THE SALE OF ALCOHOL

GROUND FLOOR PLAN.